



*Impressive Shrek 2 yielded an enormous 31 kg (68 lb) fleece. Beautiful, remote Winterslow Station.*



*All the boys*

A flock of renegade sheep has been found wandering in a far, remote corner of New Zealand's South Island high country.

These merinos have extraordinary fleeces! The first one to be shorn yielded a huge 31 kg (68 lb) – 3.5 kg (8 lb) more than the famous “Shrek” discovered last year in New Zealand.

The sheep were discovered by a local helicopter pilot. He spotted the woolly creatures wandering amongst the tussocks of Winterslow Station. They were airlifted by helicopter net into a waiting 4x4 truck.

Station owner David Wightman suspected the sheep, part of the station's 4,500 corriedale and merino



wether flock, had probably spent the last six to seven years grazing on the neighbouring station's retired land, missing the annual autumn muster for shearing.

The first sheep was shorn at the Oxford Centennial Show by the former champion New Zealand Blade Shearer, Noel Handley. It took him 9½ minutes and left these once woolly mammoths with a warm 25mm wool covering. The others are due for a haircut in the near future.

David has put together NZ's largest collection of blade shears but is keen to add more examples of these venerable hand tools. If you have any blade shears that may interest David, please contact us. Thank you.



David has kindly made some of this special wool available to us. If you would like to purchase some of these Shreks' amazing 27cm (10½ ins) 22 micron fleece visit the Ashford Club site.



*A staple of merino 27cm (10 ½ ins) long!*

# CHANEL INSPIRED

Coco Chanel, the epitome of elegance and style, created a suit of such tailoring and cloth, that it became an enduring classic.



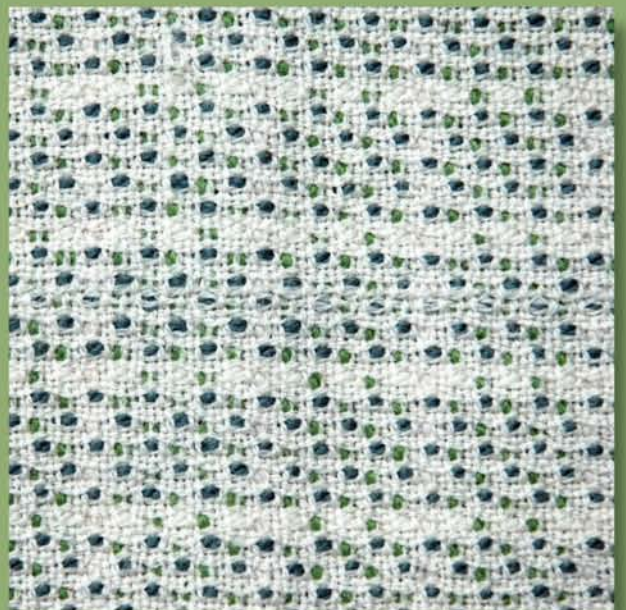
Danish weaver and author, Elsa Krogh, was particularly fascinated and intrigued by Bernat Klein's material for the Chanel suit of 1962, and after much research has found two patterns for the handweaver which are included in her latest book "The Ashford Book

of Projects for the Eight Shaft Loom". Both are backed weaves where a layer of an apparently loose weave is tied down to and strengthened by a closely woven background of fine yarns. Fabrics woven from these patterns would be perfect for creating your own Chanel suit.

For the "Lattice" cloth Elsa used a regular, smooth DK yarn (Ashford Tekapo in Natural White and Apple Green) for the surface weft, "tied down" with a fine 18/2 wool. In "Fashion Checks" she used loop mohair (Ashford Natural White and dip-dyed blue Larkspur) for the surface weft and again the fine 18/2 wool for the background weft. With one warp treated cleverly as a supplementary warp, Elsa shows you how to create these fabulous fabrics without a back beam on your loom.



*Fashion Checks in mohair (front)*



*Chanel-inspired suiting material Lattice (reverse)*